

Great
Place
To
Work[®]

Certified
2024
INDIA

Ko/oRado

alpha 15



Start With Us, Grow With Us



alpha 15



1900mm

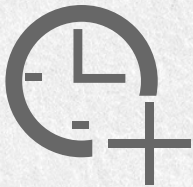
PRINT WIDTH

CMYK

COLOR

I3200-A1

PRINTHEAD TYPE



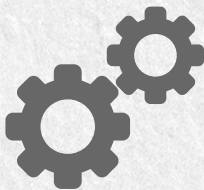
LONGER LIFE



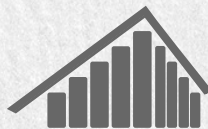
AUTO CLEANING



HIGH PERFORMANCE



HIGH STABILITY



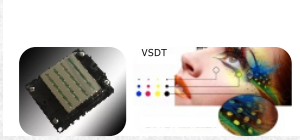
HIGH EFFICIENCY



HIGH PRECISION

EPSON I3200-A1 PRINthead

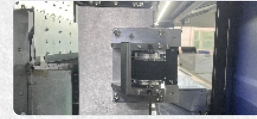
EPSON I3200-A1 printhead has 3200 nozzles, variable drop ink technology, improves printing resolution, improves color restoration degree, up to four levels of gray print can be supported.

**IMPORTED THK MUTE GUIDE RAIL**

Japanese THK mute guide rail, moving steadily, longer working life, and reducing the resistance and noise of carriage moving during the high speed printing.

**HIGH-PRECISION MACHINED PRINTER BEAM**

Machine beam overall increase and widen, higher strength, printing more smooth and stable.

**LINEAR MOTOR**

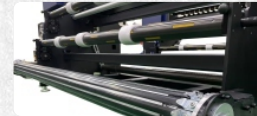
Carriage is driven by linear motor, cooperative with maglev guide rail, more stable and accurate during printing.

**IMPORTED FLUORORUBBER PINCH ROLLER**

Fluororubber pinch roller imported from the United States, which can prevent static electricity and ink flying. Printing size is more accurate. Each pinch roller is independent and able to be lifted up separately to avoid wrinkle during printing.

**RUBBER ROLLER**

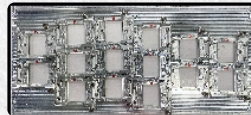
Special designed paper transmission roller, which is for thin paper printing, 20-30g paper can be printed perfectly without wrinkle.

**INDUSTRIAL SERVO DRIVE REDUCER**

Feeding & take-up system adopts industrial servo-drive reducer, which has high speed, high precision and more stable during feeding and take-up.

**NEW DESIGNED CARRIAGE PLATE**

New upgrade of the carriage plate, staggered head arrangement, 15-head is divided into three groups, 1 pass equals to 3 pass, high speed and high quality.



Technical Specification

Model	Alpha 15	
Print Head	Type: EPSON i3200 - A1 Printhead Printhead Quantity: 15 Nozzle Quantity: 3200	
Print Speed	1 Pass: 505 lm/h 2 Pass: 255 lm/h	
Ink Type	Type: Sublimation Color: CMYK (Optional 6 Colors)	
Print Width	1900mm	
Print Media	Transfer Paper	
Media Transmit	Pinch Roller Mode	
Dryer	Extra Intelligent Dryer Device	
Moisture Mode	Full Seal Auto Moisture and Cleaning	
Rip Software	Maintop, FlexiPRINT, ONXY, NeoStampa and etc. Maintop6.1(standard Equipped)	
Image Formate	JPG, TIF, PDF, etc.	
Computer Configuration	Computer System: Win7 64Bits Win10 64Bits, Hard Disk: 500G or more (SU: intel Processo, Transmison Pterta: Du Nigabit thernet Ports)	
Standard Configuration	Intelligent Drying System, Integrated Three-color Light Alarm System, Air Inflatable Feeding & Take-up Unit (1000m or 10000m Media Feeding & Take-up Unit is Optional)	
Working Environment	Temp: 18°C - 30°C, Humidity: 35%-65%	
Moisture Mode	Input Voltage: 210-230VAC Machine Printing Power: 15W Dryer: Max 10.8KW	
Moisture Mode	Dimension: 3757*1476*1962mm Packaging: 3920*1150*2110mm	Dimension: 3757*2320*1962mm Packaging: 3920*1150*2110mm 10000m Media Feeding & Take-up Unit: 2700*1100*1365mm



Shed No. A2/7111, Road No.71, Gate No : 01,
G.I.D.C Sachin, Surat – 394230, (Guj.) India.